

MEADOWLAND COVE - PLAT NO. I OF WELLINGTON - P.U.D.

IN PART OF SECTIONS 9 & 10 TWP. 44 S., RGE. 41 E.
PALM BEACH COUNTY, FLORIDA.
IN 3 SHEETS SHEET 3 OF 3
JUNE 1987



NOTES

- DENOTES PERMANENT REFERENCE MONUMENT.
- DENOTES PERMANENT CONTROL POINT.

ALL BEARINGS SHOWN HEREON ARE RELATIVE TO AN ASSUMED MERIDIAN USED THROUGHOUT WELLINGTON - P.U.D. THE WEST LINE OF SECTION 10-44-41 IS ASSUMED TO BEAR NORTH 01°10'24" EAST.

BUILDING SETBACK LINES SHALL BE AS REQUIRED BY PALM BEACH COUNTY ZONING REGULATIONS.

NO BUILDINGS OR ANY KIND OF CONSTRUCTION SHALL BE PLACED ON UTILITY, DRAINAGE, OR WATER AND SEWER EASEMENTS.

NO STRUCTURES, TREES OR SHRUBS SHALL BE PLACED IN THE MAINTENANCE OR DRAINAGE EASEMENTS.

LANDSCAPING ON UTILITY EASEMENTS SHALL BE ONLY WITH APPROVAL OF ALL UTILITIES OCCUPYING SAME.

EASEMENTS ARE FOR PUBLIC UTILITIES, WATER AND SEWER UNLESS OTHERWISE NOTED.

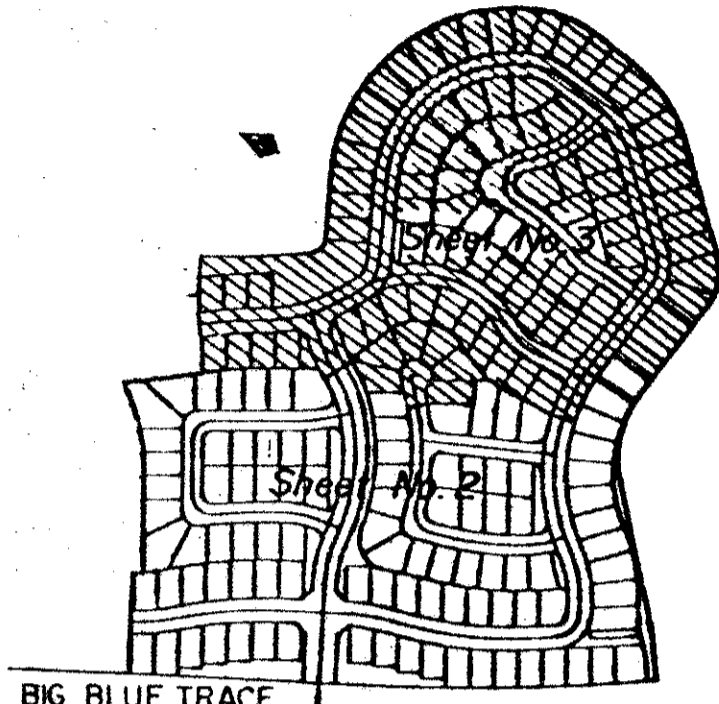
WHERE UTILITY AND DRAINAGE EASEMENTS CROSS, DRAINAGE EASEMENTS SHALL TAKE PRECEDENCE.

PARCELS AA, BB, A THROUGH H AND J THROUGH P AS SHOWN HEREON ARE FOR COMMON DRAINAGE AND UTILITY PURPOSES.

DEDICATIONS TO MEADOWLAND COVE HOMEOWNERS ASSOCIATION, INC. ARE NOT INTENDED TO CREATE ANY RIGHTS IN FAVOR OF THE GENERAL PUBLIC.

LAKE WELLINGTON

(DRAINAGE EASEMENT
PER O.R.B. 2452, PGS. 250-266)



INDEX MAP

BIG BLUE TRACE

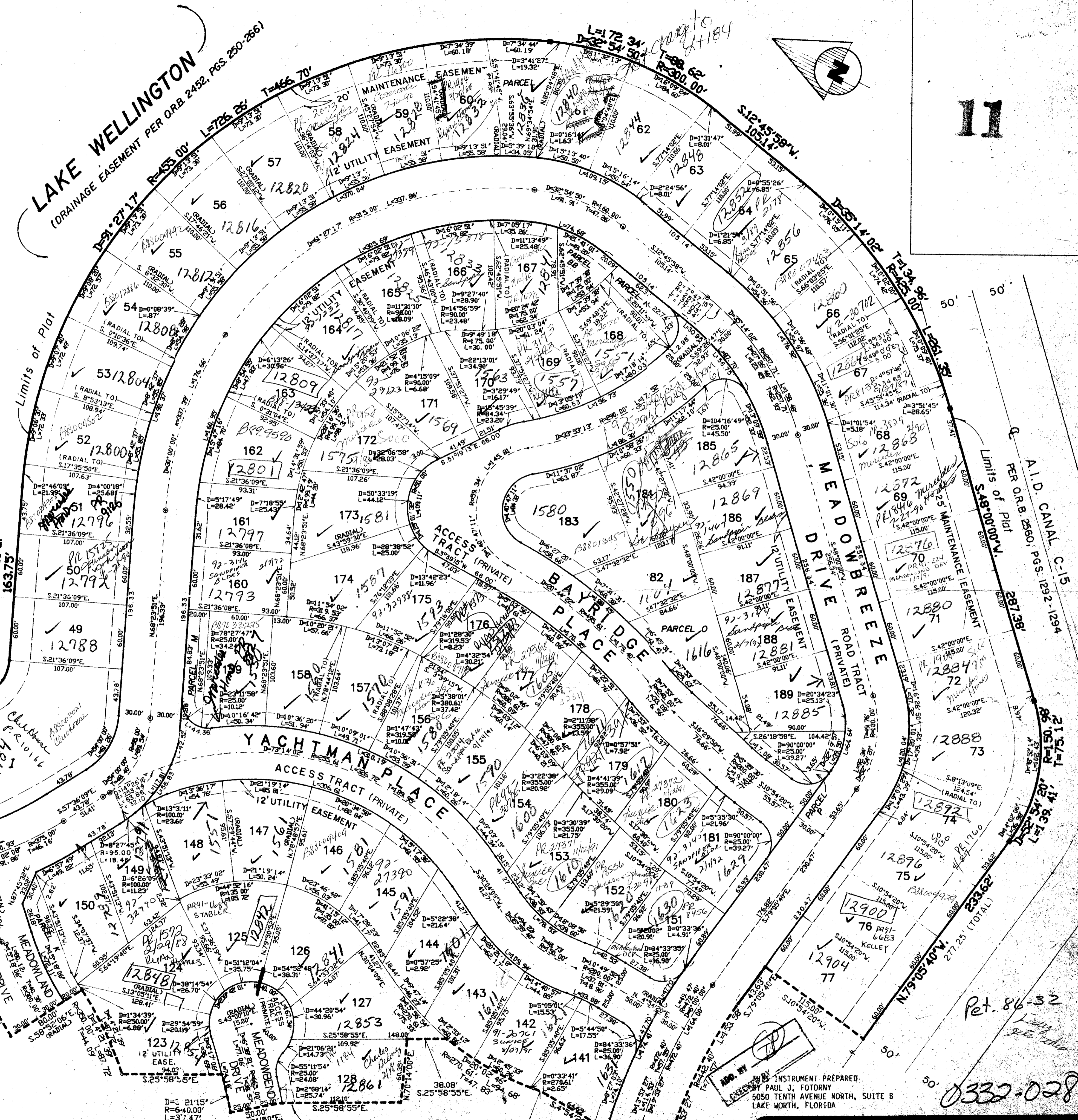
Section 10

(UNPLATTED)

MATCH LINE
SEE SHEET 2 OF 3

MATCH LINE
SEE SHEET 2 OF 3

Subdivision - Meadowland Cove
Book 58
Flood Zone B
Zoning AR
Quad 9-177
SE PUB 0-62
FUD NAME - Plat 1 Wellington
TAZ 727



INSTRUMENT PREPARED BY
PAUL J. FOTORNY
5050 TENTH AVENUE NORTH, SUITE B
LAKE WORTH, FLORIDA

Dailey-Fotorny, inc.
land surveyors, planners, engineers
5050 10th Avenue North, Suite B, Lake Worth, Florida 33464
Phone 305/968-8797

Meadowland Cove #1 58/11

Ret. 86-32
L. J. Kelly
etc.

0332-028

11